



EGIS
ENGINEERING

Secure cloud backup for critical remote video surveillance applications, with 100% data in India.

COMPANY PROFILE

PREPARED BY
Vaibhav Gandhi
Harmeet Singh

Publication of case studies and solutions designed & installed by Egis Engineering, India.
November 2022

Contents

01

About Us

A brief intro in the latest projects we want you see.

02

Thermal Imaging saves the day!

from fiction to Hollywood movies to a reality in India, look at how thermal imaging is being used in day-to-day cases.

03

Secure In the Cloud

HSI IDC explores the usage of remote video recording to enhance security measures taken at their sites.

04

Revisiting SMP

Safe Mohali project implements Automatic License Plate reading technology to aid efficient policing.

05

Notable Mentions

A look at some other instances of software and hardware implementations in the last few months.

our valued customers



Indian Navy



About US

EGIS ENGINEERING

We are engineering solution designers in the domain of IT hardware, physical and network security. Our offices are in Kolkata and Chandigarh. Service network is available across the country.

Competence Certificates

- HCSA - Global certificate
- NSDC- Govt. Of India
- CSP Certified
- ESAC Certified

Some Key Customers

- Indian Oil Corporation Limited
- Indian Army
- Govt. Of Haryana.
- Income Tax Dept.
- Verka
- Tech Mahindra
- Jones Lang Lasalle (JLL)
- Hella India Lighting
- Punjab Police

Key Activities

- Video Surveillance and Thermal Imaging
- Attendance & Access Control Systems
- Perimeter Detection & Control
- Computer Vision and Video Analytics
- Office Automation, RPA & Business Intelligence
- On-Premises and Cloud Server Infrastructure

The temperature is rising!



Many thermal cameras are now available in India & innovators are creating eye-catching and useful applications

Thermal cameras were popular during the covid wave, there were tones of cameras detecting higher body temperatures, but the market soon changed into a hotbed of technical innovation with the input of this major catalyst missing earlier.



Egis Engineering has had a major chunk of their annual business from automation and improvement in how perimeters are secured. Thermal cameras give a major leverage as our command center solution now integrates thermal camera in the first line of detection.

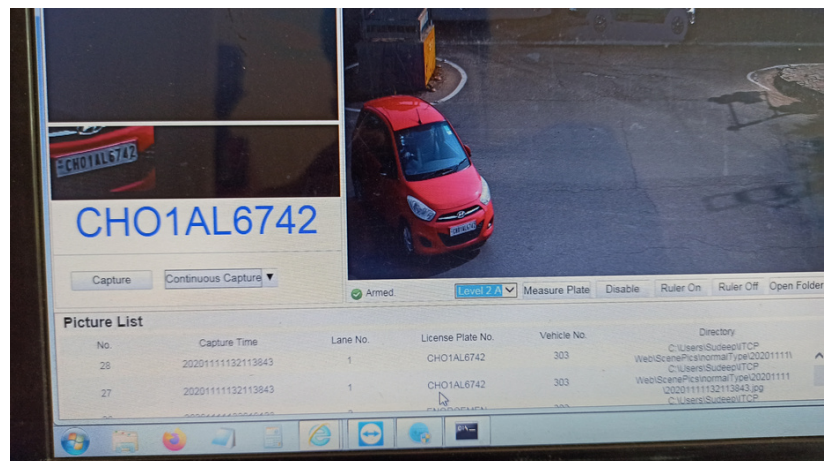
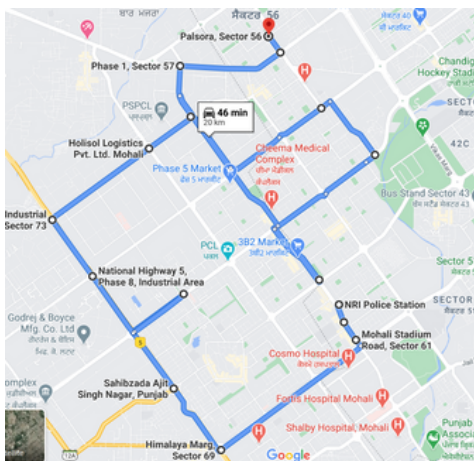
Popular and useful applications that we create using thermal camera

1. Long range perimeter security.
2. Improved night security.
3. Evacuation in case of smoke and fire.
4. Wildlife monitoring in National parks and railways lines crossing forest areas.

With the use of computer vision and AI we can spot targets within the actionable time frames.



Revisiting the Safe Mohali Project (SMP)



The Safe Mohali Project was inaugurated in the presence of Senior Police officials in the City of SAS Nagar (Mohali), was a cornerstone in the administration's raised expectations of CCTV footage quality and availability. These 60Fps cameras captured detailed images of license plates and car occupants at most critical junctions of the city.

The system was equipped with latest generation of AI based Numberplate Detection capabilities. The cameras were streaming real-time footage at a central location with the use of Optical Fiber.

Revisiting the Safe Mohali Project (SMP)



Revisiting the Safe Mohali Project (SMP)



Exciting things and notable mentions



Computer Vision (CV)

Using footage from CCTV cameras we can extract critical information. These CV algorithms work like normal human vision identifying objects & actions & making sense of what is happening.

We at Egis Engineering use a popular CV algorithm called YOLO.

Some common problems we expect to solve with CV enabled IN offices are:

- Machine less Attendance
- People in and out of a building (People counting)
- SOP (std operating procedure) management
- Detection of Fire threats

Safe City Security Retail

the smart camera specialists



C3WN

Outdoor Smart Wi-Fi Camera

Strong Wireless Connectivity

Featuring dual Wi-Fi antennas, the C3WN looks out for your property while reliably staying connected.

Key Features



Full HD 1080p



Night Vision
Up to 30 Meters
(100 ft)



Strong Wi-Fi Connection
Using Two Antennas



Supports 2.4GHz Wi-Fi



Audio Reception
Up to 5 Meters (16.4 ft)



Supports MicroSD
Card Up to 256GB



IP66 Dust and Water
Protection



Call now for more details

Safe City Security Retail
Plot 423, Sector 82, Mohali.
9876-365-247

secure is beautiful

EGIS
ENGINEERING

Please direct queries at

Sudeep Singh
sudeep@egisengineering.in
www.egisengineering.in

Plot 341 Fifth Floor, Phase 9 Industrial Area, Mohali,
Punjab, India
9855545544